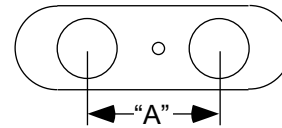
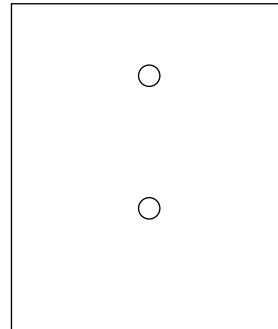


**Fast-Tool**

**SB100-( )**  
**Spindle Spacer Block**  
Spacematic Nut Plate Drill Motor

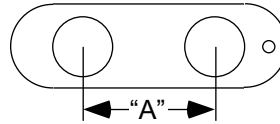
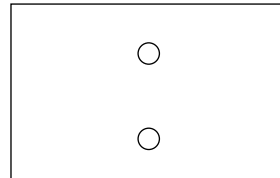


Provide spindle spacing and spindle diameter when ordering.

Material: Bronze  
Finish: None

**Fast-Tool**

**SB200-( )**  
**Spindle Spacer Block**  
Spacematic Untralite Nut Plate Drill Motor II

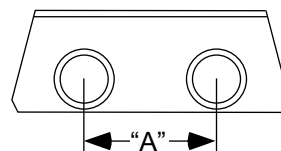
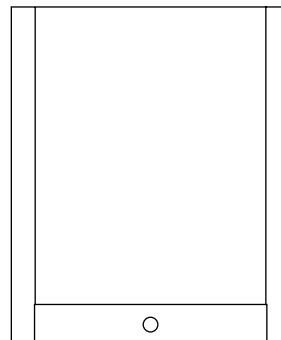


Provide spindle spacing and spindle diameter when ordering.

Material: Bronze  
Finish: None

**Fast-Tool**

**SP100-( )**  
**Spindle Support Plate**  
Quackenbush Model 10QNPD

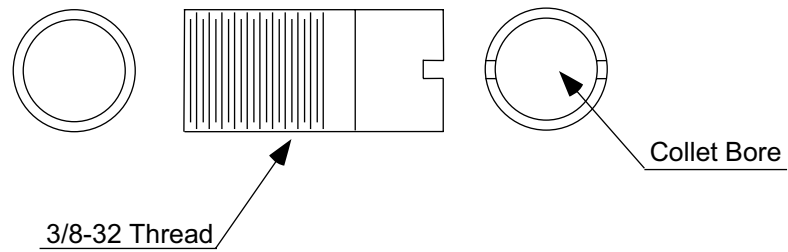


Provide spindle spacing and spindle diameter when ordering.

Material: Aluminum with bronze bushings  
Finish: None

**Fast-Tool**

# CB100-( ) Collet Bushing

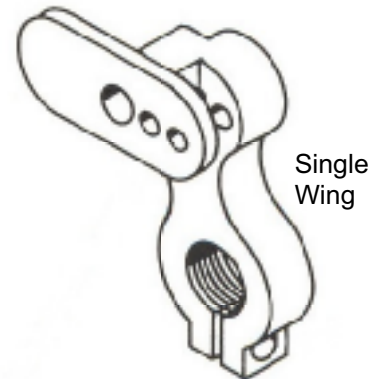
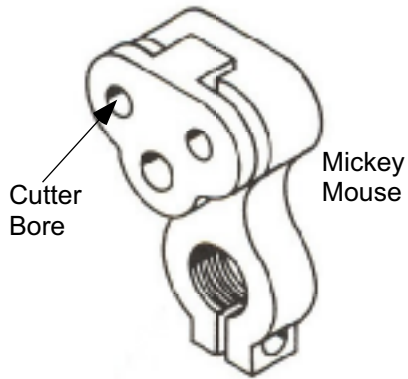
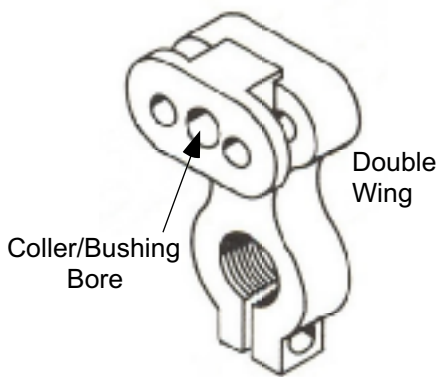
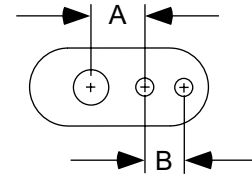
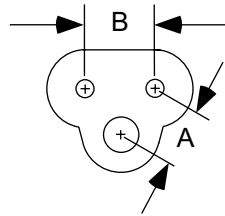
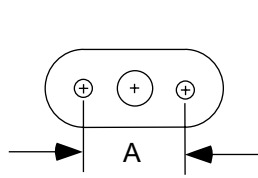


CB100-( )  
Base No.      Collet Bore Desired

Material: Heat Treated Alloy Steel  
Finish: None

# Fast-Tool

# Pressure Foot Double Wing, Single Wing, Mickey Mouse



Pressure Foot Style		Cutter Shank Dia.	
Style	Dash	Size	Dash
Double Wing	1	3/16	1
Single Wing	2	1/4	2
Mickey Mouse	3	5/16	3

Example Part Number: 1688B2

Double Wing  
.688 Spacing  
Collet Bushing  
1/4" Cutter

$\frac{1}{\text{Style}}$     $\frac{\text{XXX}}{\text{Cutter Spacing}}$     $\frac{\text{YYYY}}{\text{Collet Bore}}$     $\frac{2}{\text{Cutter Diameter}}$

Use "B" in place of collet bore to designate use of collet bushing.

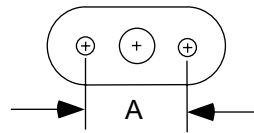
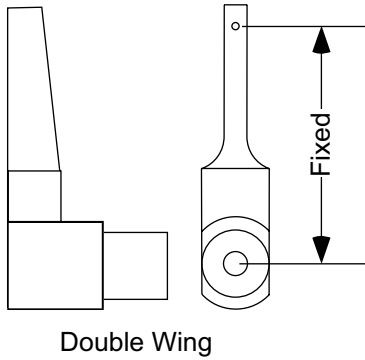
Collet bushing should be ordered separately.

Material: Alloy Steel  
Finish: Black Oxide

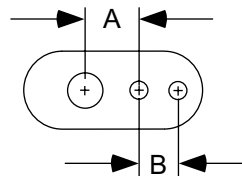
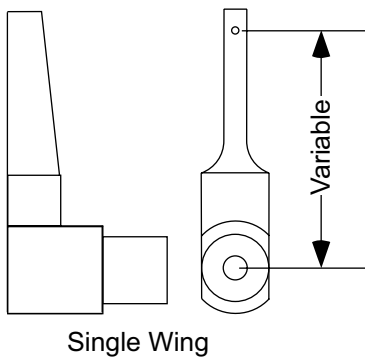
### Lift Finger Style

### Nut Plate Style

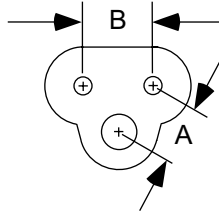
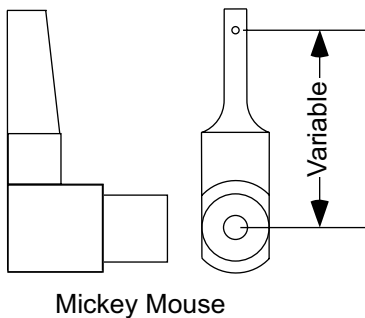
### Part Number Reference



LF1



LF2-(A)-(B)

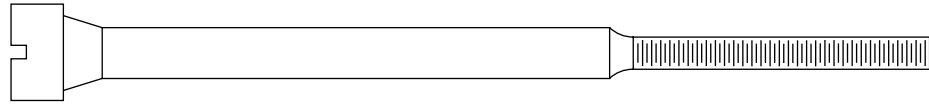


LF3-(A)-(B)

Material: Alloy Steel  
Finish: Black Oxide

Style	Code
Double Wing	1
Single Wing	2
Mickey Mouse	3

LF( )-(A)-(B)  
 Style Code | Variable | Nutplate | Dimensions

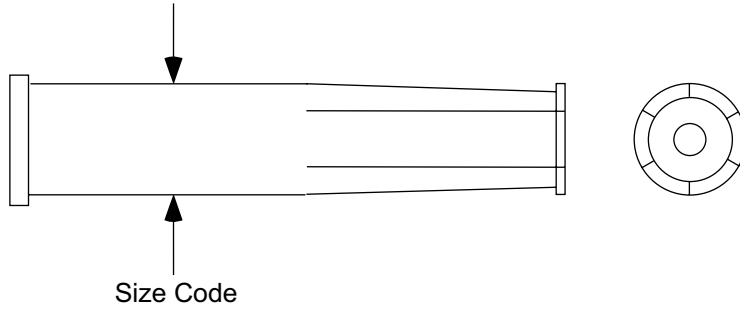


Length	Code
Short	023
Long	040

Ex.: M0231875

M ( ) ( )  
—  
Length Code —  
—  
Size Code —

Material: Tool Steel  
Finish: Black Oxide



Length	Code
Short	023
Long	040

Ex.: C0231875

C ( ) ( )  
Length Code — Size Code

Material: Tool Steel  
Finish: Black Oxide